

MF1-R-USB-KB-D5

**13.56Mhz Mifare ISO14443A RFID Reader
with USB Keyboard emulation interface
(Software configurable to Read UID or Block Data)**

FEATURES :

- USB Keyboard Emulator, Plug and Play
- Frequency: 13.56MHz
- Software configurable to read UID or Block Data
- Supported Tags : Mifare 1K(S50) , 4K(S70) , Ultralight, DESfire
- Integrated antenna, LED and Buzzer
- Working current less than 80mA @5.0V
- Operating distance: Up to 50mm, depending on tag
- Dimension: 72 × 57 × 15 mm

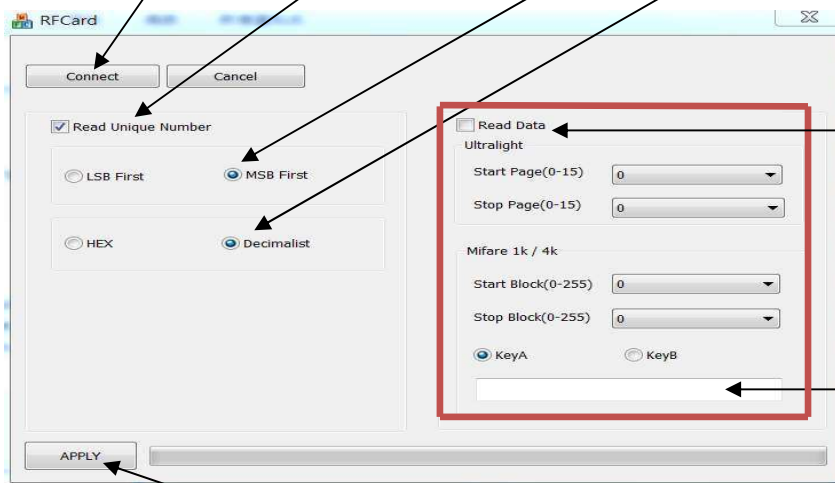
SETTING MODE

[1] Switching SW1-1 to OFF position and repower to setting mode.

[2] Run path://Config.exe, RED-LED will on and flash

[3] click "Connect" to connect with computer

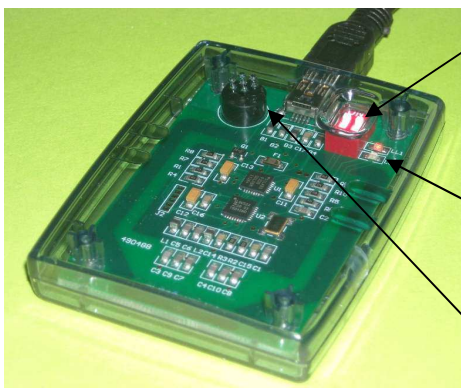
(Default setting : Read Unique Number / MSB First / Decimalist)



Click "Read Data" here and select the block range to read

Input key data
Default key value for a blank card is ffffffff

[4] Click "APPLY" to save the setting



| | | |
|-----|-----|---------------------|
| SW1 | OFF | Setting Mode |
| SW1 | ON | Working Mode |
| SW2 | OFF | Output without "CR" |
| SW2 | ON | Output with "CR" |

| | | |
|-----------|------------|-----------------|
| RED- LED | Keep on | working mode |
| RED- LED | Keep Flash | setting mode |
| Green-LED | On | Read tag status |

Buzzer will beep when read card

Default Switch setting : 1 & 2 ON

Read Unique Number

- LSB First or HSB First
- HEX or Decimalist

e.g. data stored in block0 of Mifare 1K(S50) as below table :

| BLOCK | 0 | 1 | 2 | 3 | 4 | 5 | 6 | 7 | 8 | 9 | 10 | 11 | 12 | 13 | 14 | 15 |
|-------|----|----|----|----|----|----|----|----|----|----|----|----|----|----|----|----|
| 0 | 01 | 02 | 03 | 04 | 04 | 88 | 04 | 00 | 47 | C1 | 25 | A8 | 45 | 00 | 31 | 06 |

If [LSB] and [HEX] selected, outputs 01020304

If [LSB] and [Decimalist] selected , outputs 0016909060

If [MSB] and [HEX] selected, outputs 04030201

If [MSB] and [Decimalist] selected , outputs 0067305985

Remark:

-will append 0 in the front to keep all the output 10 digits number unified in DEC.

-Read 8 digit(hex) or 10 digit(dec) UID for Mifare S50 & S70

-Read 14 digit(hex) or 17 digit(dec) UID for Mifare ultralight & Desfire

Read Data Block

It not only output UID , also can read data from Ultalight, Mifare 1K(S50) & Mifare 4K(S70).

Remark:

: All blocks which to be read should be have same key.

: Default KeyA for a blank card is ffffffff

WORKING MODE

Switching SW1-1 to ON position and repower to run working mode.

RED-LED will keep on.

According to the config information stored in memory, it will automatically read the unique serial number or data, then outputs to PC when Mifare tag in its detective range.